

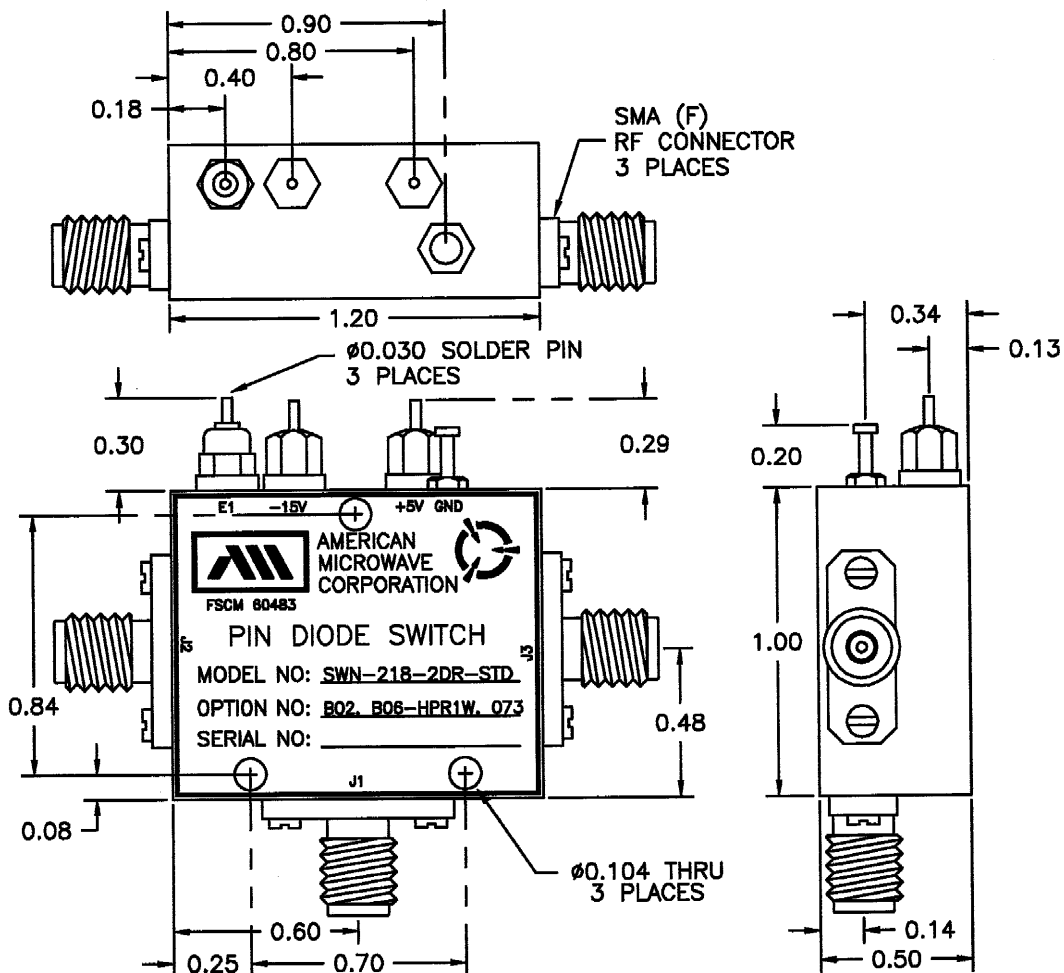
DESCRIPTION:

AMC MODEL SWN-218-2DR-STANDARD OPTIONS B02, B06-HPR1W, 073 IS A HIGH POWER (1 WATT) SINGLE POLE TWO THROW, REFLECTIVE SWITCH MODULE WITH LOW INSERTION LOSS, HIGH ISOLATION AND WITH INTEGRAL TTL DRIVER, DESIGNED FOR 700 MHz TO 3.2 GHz OPERATION.

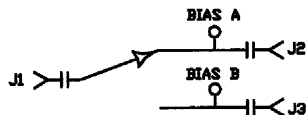
ZONE		REV.	DESCRIPTION	DATE	APPROVED
			ORIGINAL RELEASE	10/12/99	

SPECIFICATIONS:

- FREQUENCY: 700 MHz TO 3.2 GHz
- INSERTION LOSS: 1.25 dB MAX. 1.0 dB TYPICAL
- ISOLATION: 60 dB MINIMUM
- VSWR (ALL PORTS): 2.0:1
- SPEED: RISE: 15ns TYPICAL, 25ns MAX.
FALL: 10ns TYPICAL, 15ns MAX.
DELAY ON: 75ns TYPICAL, 100ns MAX.
DELAY OFF: 75ns TYPICAL, 100ns MAX.
- RF POWER: +30 dBm MAXIMUM
- CONTROL: TTL SINGLE CONTROL
- LOGIC "0": J1 TO J2
- LOGIC "1": J1 TO J3
- POWER SUPPLY: +5 VDC @ 100 mA MAXIMUM
-15 VDC @ 75 mA MAXIMUM
- CONNECTORS (RF): SMA FEMALE, 3 PLACES
- CONNECTORS (POWER): SOLDER PINS
- CONNECTORS (CONTROL): SOLDER PINS
- SIZE: 1.20" (L) x 1.00" (W) x 0.50" (H)
- WEIGHT: 1.5 OUNCE TYPICAL



BLOCK DIAGRAM



ENVIRONMENTAL RATINGS:

- TEMPERATURE: -55°C TO +85°C (OPERATING)
-65°C TO +125°C (STORAGE)
- HUMIDITY: MIL-STD-202F, METHOD 103B COND. B
- SHOCK: MIL-STD-202F, METHOD 213B COND. B
- VIBRATION: MIL-STD-202F, METHOD 204D COND. B
- ALTITUDE: MIL-STD-202F, METHOD 105C COND. B
- TEMPERATURE CYCLE: MIL-STD-202F, METHOD 107D COND. A

NOTE: THE ABOVE SPECIFICATIONS ARE SUBJECT TO CHANGE OR REVISION

ALL DIMENSIONS ARE IN INCHES

TOLERANCES:
X.XX ±0.020
X.XXX ±0.010

APPROVALS		DATE	AMERICAN MICROWAVE CORPORATION FREDERICK, MARYLAND		
DRAWN <i>WSP, RRA</i>		10/12/99	TITLE PRODUCT FEATURE SWN-218-2DR-STANDARD OPTIONS B02, B06-HPR1W, 073		
CHECKED			SIZE A	FSCM NO. 60483	DWG NO. 100-4427-9
ISSUED			SCALE N/S	REV. SHEET 1 of 3	